

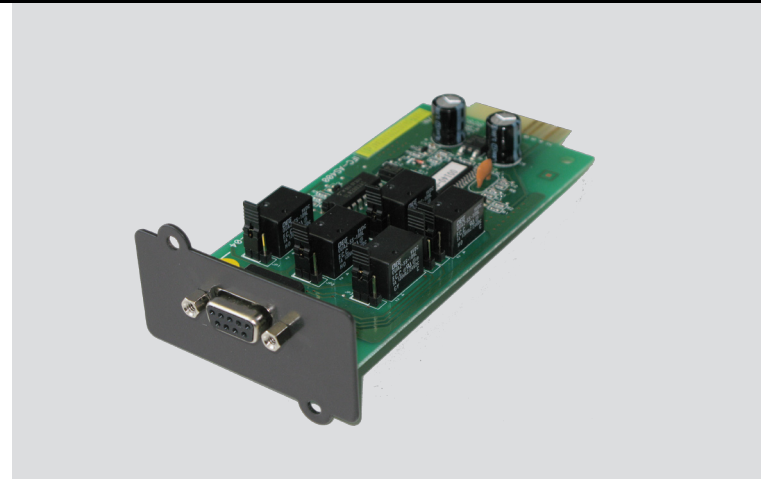
Ease of use

Relay card

This relay card is an option for UPS series Protect B. / C. / C.R / 1. and 1.M and enables the communication via potential free contacts. The contacts can be configured as opener or shutter. The status notifications will be transmitted by a 9 pin Sub-D socket. The relay cards are optimized for the IBM AS400 but can also be used for other applications.

Configuration:

1. UPS failure (battery \leq unload voltage)
2. Sammelstörmeldung (Meldungen der Pins 1, 7, 9)
3. Undefined
4. Undefined
5. Shared contact (ground) for pin 1, 2, 6, 7, 8 and 9
6. Active bypass, mains powered
7. Undervoltage of battery
8. UPS normal mode
9. Mains failure, battery mode



Key features:

- Communication card for expansion slot
- Potential free contacts, configurable as opener or shutter (not at Relaycard_B)
- Maximum contact rating: AC/DC \approx 24V / 0,5 A

Relay card: Technical data

	RELAYCARD_B	RELAYCARD
Compatibility	Protect B.	Protect C. / C.R / 1. / 1.M
Contacts configurable	as shutter	as opener or shutter
Outlets	9 pin Sub-D socket	
Scope of delivery	relay card, operating instruction (printed)	
Dimensions (W x H x D)	60 mm x 44 mm x 120 mm	
Weight	60 g	
AEG part number	600 000 5196	600 000 3932

AEG is a registered trademark used under license from AB Electrolux • Specifications are subject to change without notice • 07/2010

AEG Power Solutions GmbH
Emil-Siepmann-Str. 32
59581 Warstein-Belecke
Germany
Tel.: +49 2902 763 168
Fax: +49 2902 763 169
www.aegpartner.net.com

PERFECT IN FORM AND FUNCTION

AEG